

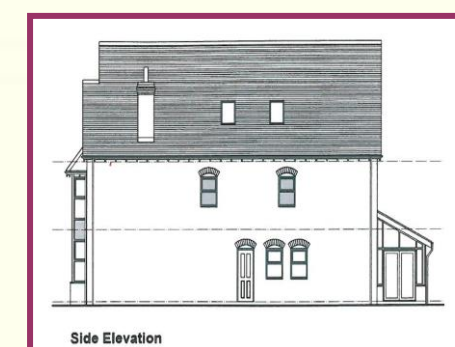
[www.cardwells.co.uk](http://www.cardwells.co.uk)

Incorporating: Wright Dickson & Catlow, WDC Estates

## GRANGE ROAD, PLOT 1 THE TREE TOPS BROMLEY CROSS, BL7 9GA



- Superb detached new build
- Approx 3,567 square foot
- 5 beds, 3 en suites + shower rm
- Open, light & airy design
- Much admired location
- Part exchange considered
- No upward chain
- Double garage, drive & grdns



**£750,000**

**CARDWELLS BOLTON**  
11 Institute Street BL1 1PZ  
t: 01204 381 281  
e: bolton@cardwells.co.uk

**CARDWELLS BURY**  
14 market Street BL9 0AJ  
t: 0161 761 1215  
e: bury@cardwells.co.uk

**WHITEFIELD/PRESTWICH**  
44 Bury Old Rd M45 6TL  
t: 0161 773 1011  
e: whitefield@cardwells.co.uk

**CARDWELLS M28**  
6 Memorial Rd M28 3AQ  
t: 0161 794 3434  
e: m28@cardwells.co.uk

Fivegate Ltd. Registered in England No. 1822919 Registered Office: 44 Bury Old Road, Whitefield, Manchester, M45 6TL. Directors: R.W.L. Cardwell, A.R. Cardwell, C. Pearson

Plot 1 The Tree Tops, is a newly built detached family home which expands to an impressive approx 3,567 square foot of superb living space across three levels with a double garage and is set in a generous plot.

The development is situated with one of Bolton's most admired positions, being just off Grange Road, in Bromley Cross which itself leads to the Jumbles reservoir and the superb local countryside whilst being only a short walk to Bromley Cross Railway Station which serves Manchester, Bolton and Blackburn, and the ever popular Turton High School is nearby as are excellent everyday amenities such as; shops, primary schools, sports clubs, restaurants and leisure facilities are all within easy reach.

The property has been thoughtfully designed with open space and natural light in mind throughout with accommodation that briefly comprises: reception hallway, powder room WC, large lounge, stunning open plan granite kitchen which opens directly into the family / dining room, utility room, landing, master suite with large bedroom, dressing room space, four piece en suite bathroom, second bedroom with three piece en suite, third bedroom with three piece en suite, upper level landing, two additional double bedrooms and a shower room suite.

There is a double garage, additional driveway parking and the property is set in a good size plot.

We are advised that the standard of the fixtures will be very high throughout with gas central heating, double glazing etc as would be expected in a property of this calibre, however if the property is reserved early enough a choice of fixtures and fittings may be available.

We understand that Granite work surfaces, a "range style" cooker, dishwasher and quality flooring will be provided in the kitchen and bathrooms, but this may be subject to change.

The property is expected to be completed by Winter 2016, and, importantly our clients are willing to consider a part exchange, so that may offer an easy move solution.

Please speak Cardwells to discuss this option in more detail, via 01204 381281.



**Please note: all viewings are by appointment only through our BOLTON Office**