



Biddisham Close,
Nailsea, North Somerset
£235,000

westcoast
PROPERTIES

A great opportunity to purchase a three bedroom house with excellent ground floor accommodation comprising of lounge leading into dining room, fully fitted kitchen with a conservatory overlooking the rear garden. On the first floor are two doubles and one single bedroom and bathroom. The property also benefits from parking and a single garage. An early viewing is essential.



ALL SIZES ARE APPROXIMATE, THE ACCOMMODATION COMPRISES:

uPVC front door leading into:

Hallway Door to the living room, stairs up to the first floor and radiator

Lounge 15' 9" x 11' 0" (4.8m x 3.35m) uPVC window to the front, radiator, coving to ceiling and door leading into:

Dining Room 9' 9" x 7' 6" (2.97m x 2.29m) Part glazed uPVC door to the conservatory and uPVC window into the conservatory, radiator, coving to ceiling, door to under stairs storage and opening into:

Kitchen 9' 9" x 6' 3" (2.97m x 1.91m) A range of high and low level units with work surface over, sink and drainer, electric oven and hob with extractor over, space and plumbing for a slim line dishwasher and a fridge, tiled splash backs, down lighters, coving to ceiling and uPVC window to the conservatory

Conservatory Sliding uPVC glazed door to the rear garden and uPVC windows to rear and side

Stairs up to the First Floor

First Floor Landing Doors to bedrooms one, two, three and bathroom, door to the airing cupboard which has a wall mounted combi boiler, access to the loft

Bedroom One 10' 10" to Wardrobe x 9' 0" (3.3m x 2.74m) uPVC window to rear, radiator and built in wardrobe with mirrored sliding doors

Bedroom Two 12' 9" x 6' 6" (3.89m x 1.98m) uPVC window to front, radiator

Bedroom Three 8' 5" x 7' 5" (2.57m x 2.26m) uPVC window to front, radiator

Bathroom 7' 6" x 4' 10" (2.29m x 1.47m) uPVC window to rear, three piece suite comprising of low level W.C, wash hand basin on pedestal, bath with electric shower over, chrome heated towel rail, fully tiled, extractor fan and

Front Garden Laid to lawn and footpath up to the front door

Rear Garden Patio area, step down to gravel area, a raised flower bed, enclosed by wooden panel fencing, gate at the rear leading to car parking space and single garage

Garage Up and over door, power and light

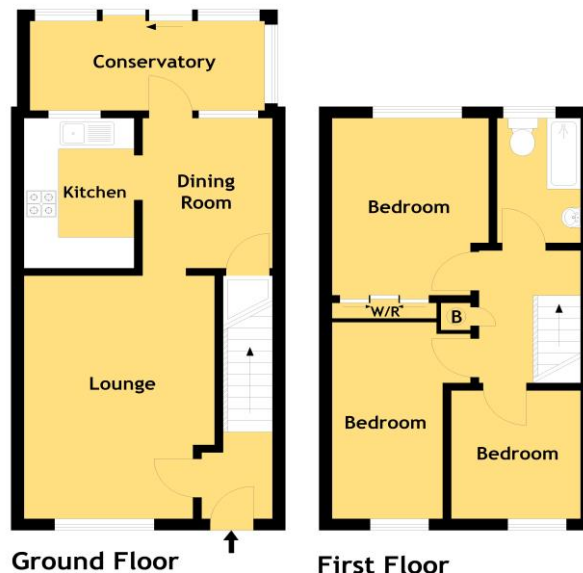
PLEASE GIVE US AS MUCH NOTICE AS POSSIBLE FOR WEEKEND VIEWINGS TO AVOID DISAPPOINTMENT.

For a free market appraisal contact this office.

MONEY LAUNDERING REGULATIONS 2012

Intending purchasers will be asked to produce identification and proof of financial status when an offer is received. We would ask for your co-operation in order that there will be no delay in agreeing the sale.

Approx. Gross Area 833.59 Sq.Ft - 77.44 Sq.M

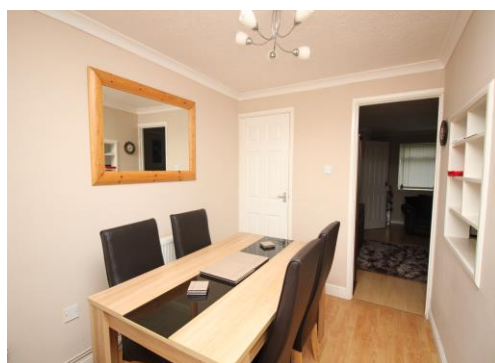


For illustrative purposes only. Not to scale. Ref no:AP/10332/AN
Whilst every attempt has been made to ensure accuracy of the floor plan all measurements are approximate and no responsibility is taken for any error, omission or measurement.
Floor Plan produced by EPC Provision.com

01275 857773

infonailsea@westcoastproperties.uk.com

www.westcoast-properties.co.uk



Consumer Protection from Unfair Trading Regulations 2008.

The Agent has not tested any apparatus, equipment, fixtures and fittings or services and so cannot verify that they are in working order or fit for the purpose. A Buyer is advised to obtain verification from their Solicitor or Surveyor. References to the Tenure of a Property are based on information supplied by the Seller. The Agent has not had sight of the title documents. A Buyer is advised to obtain verification from their Solicitor. Items shown in the photographs are not included unless specifically mentioned within the sales particulars. They may however, be available by separate negotiation. Buyers must check the availability of any property and make an appointment to view before embarking on any journey to see a property.

The Data Protection Act 1998

Please note that all personal information provided by customers wishing to receive information and/or services from the Estate Agent will be processed by the Estate Agent and the "Property Sharing Experts" group (of which it is a member) for the purpose of providing services with the business of an Estate Agent but specifically excluding mailings or promotions by a third party. If you do not wish your personal information to be used for any of these purposes, please notify your Estate Agent.